

Where Does the Entrepreneur Fit In?

If your establishment is selected in the Annual Survey you can assist by doing the following:

Filling out the questionnaire and returning it to our office on the due date to avoid unnecessary reminders. Please do not hesitate to contact the C.S.O. if you have any questions concerning the completion of the questionnaire.

Are Estimates Acceptable?

Yes, you may estimate the numbers where the questions asked are in a different format than your establishment's record.

Is it mandatory and is it confidential?

Your response to the questionnaire is required by law. The survey is conducted in accordance with the Statistics Act, Chapter 19:02 of the Revised laws of Trinidad and Tobago (1981).

The data are used solely for developing summary tables and will not be used for purposes of taxation, investigation or regulations.

More information on the Survey of Business Establishments can be obtained by contacting:

Ministry of Planning, Housing and the Environment
Central Statistical Office
National Statistics Building
#80 Independence Square,
PO Box 98
Port of Spain.
Trinidad, West Indies.

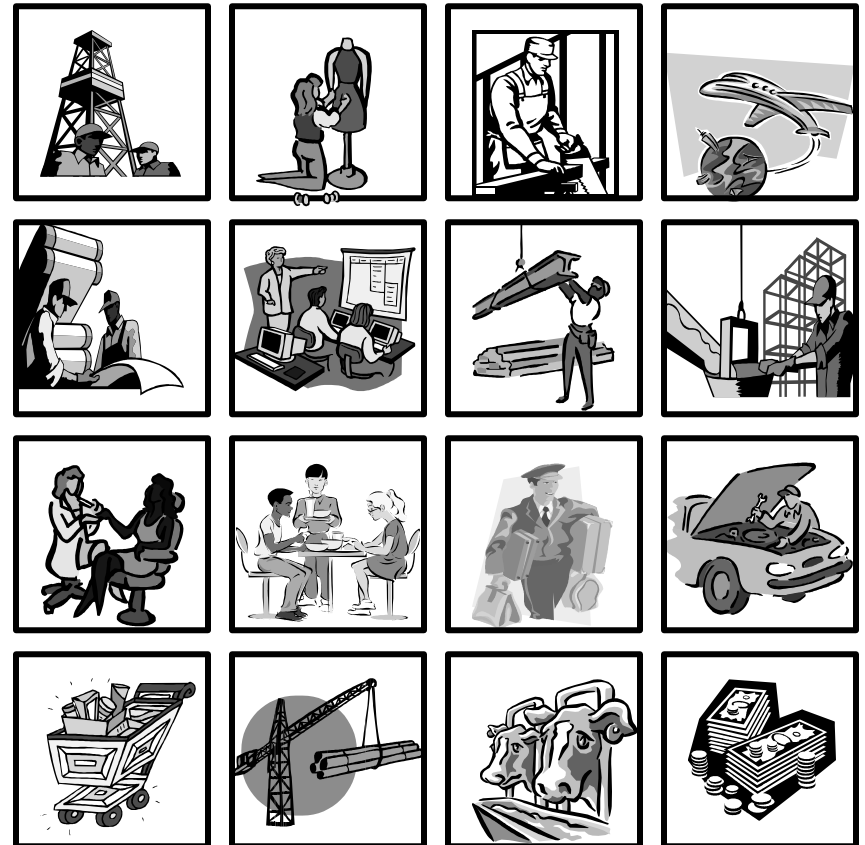
Tel nos: 623 – 4493
Ext: 4414 – 4423
Fax: 625-3802
Email: bizinfo@statistics.gov.tt

Revised 2004



REPUBLIC OF TRINIDAD AND TOBAGO
MINISTRY OF PLANNING, HOUSING AND THE ENVIRONMENT
CENTRAL STATISTICAL OFFICE

SURVEY OF BUSINESS ESTABLISHMENTS



Purpose and objective

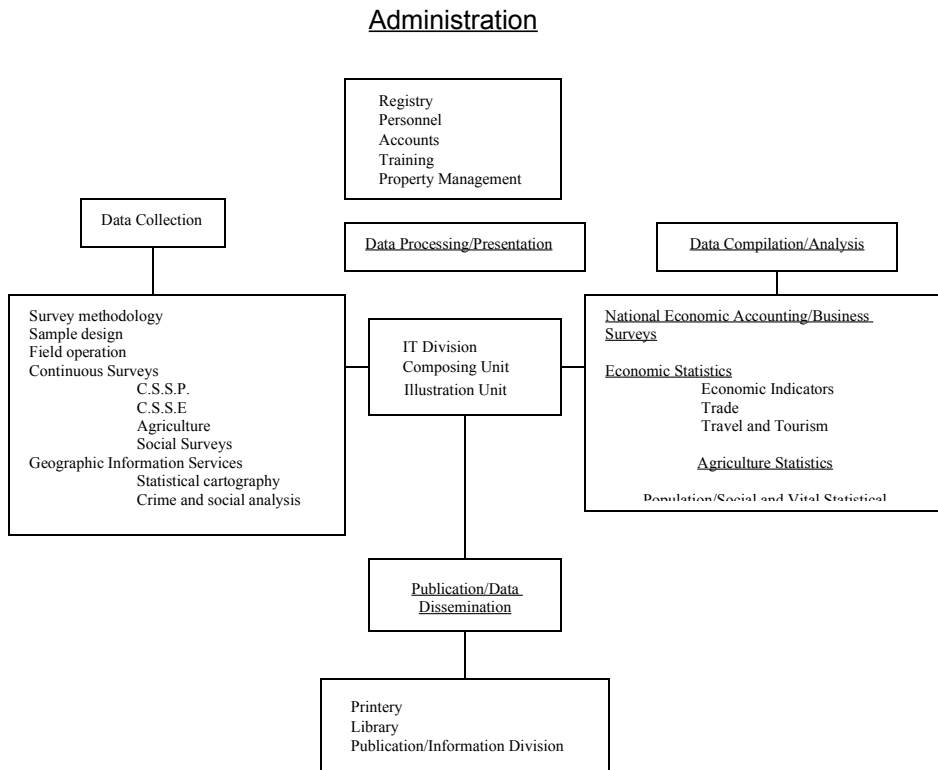
The Central Statistical Office (C.S.O) is the main source of all official statistics. Founded since 1949, the department is officially charged with the responsibility for compiling statistics over a broad range of subjects – Population Censuses, Agriculture, Economic and Social Statistics – for purposes of servicing the needs of Government, the Business and Social Community and International Organizations.

Legal Provisions

The Department operates within the provisions of the Statistics Act, Ch.19:02, (1981) which provides the authority for its activities and guarantees confidentiality for information collected. Despite this, the technique of “moral suasion” has been the normal mode of operation used in obtaining data.

Organization

The Central Statistical Office is organized along five (5) functional lines:



Objectives of the Annual Survey of Business Establishments

The survey of business establishments is an annual inquiry into the operation of business units excluding government, agriculture, banks and financial institutions as the data for these are obtained from administrative and other secondary sources.

How is the data used?

The data collected are primarily financial in nature and consists of the expenditure, revenue, asset and liabilities of the establishment. The data are utilized by the National Accounts Division of the C.S.O. to estimate the Gross Domestic Product (GDP) and other macro economic variables of Trinidad and Tobago. The GDP is the total market value of all goods and services produced in the country within a given period of time minus the goods and services used up in production (intermediate costs). Planners use the data to evaluate the performance of the various industries in the economy and to formulate policy decisions for the future.

How can the data collected assist Entrepreneurs?

Basic Data available include:

1. A list of business establishments by:

- Employment size group
- Geographical Area:
 - County
 - Ward
 - Region
 - Community
- Industries or economic activity
- Type of ownership
- Country of Ownership

2. Businessmen can use the data to evaluate their performance vis-à-vis the industry's profile.

3. For their own planning and decision making process.